

[Print this page](#)



## BAG BOMBER SERIE - MODEL: BOMBER 170 F

Modern and exceptionally strong, this case is studied to resist even in the most extreme use conditions. The double wall construction and the body in shock-proof high density Polyethylene, with great resistance to high and low temperatures and to most of the corrosive chemical substances, grant to this product the highest levels of reliability on the market.

### General features:

- Blow moulded Polyethylene shells with incorporated feet
- 2 metal lid support stays with safety spring pawl and doublefixing point
- 2 locks with keys
- Steel hinge riveted in various points
- ergonomic handle, rubber coated grip

### Model characteristics:

- top filled with convoluted foam
- bottom filled with layers of precubed foam
- ideal to transport computers or sensitive equipment

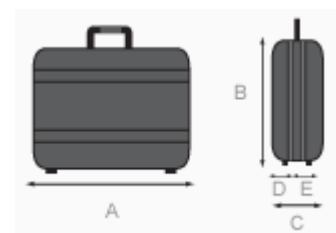


## SPECIFICATIONS:

Internal dimensions

	A	B	C	D	E
mm	422	327	185	75	110

Weight	Height from the bottom	Color
3.8 Kg	0 mm	black



## FEATURES

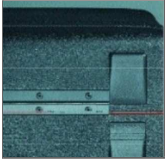
---



Bottom with adjustable dividers



Double wall construction technique



Steel hinge riveted in various points for maximum resistance even in case of intensive use.

---

### **GT LINE Srl**

Via Del Lavoro, 50/52 I - 40056 Crespellano (BOLOGNA) - ITALY  
Phone +39 051 65041 - Fax +39 051 734925 - [salesoffice@gtline.com](mailto:salesoffice@gtline.com)